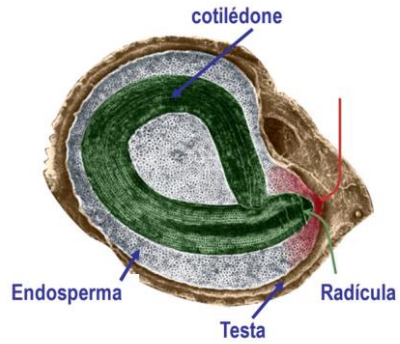


Monocotiledôneas

Embrião



Monocotiledônea

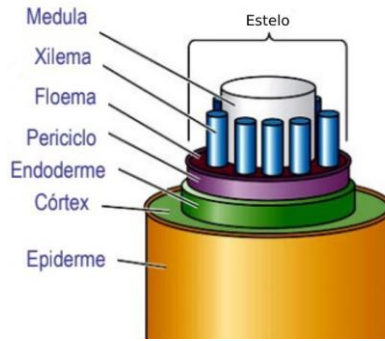
Um cotilédone

Folha



Nervuras paralelas

Caule



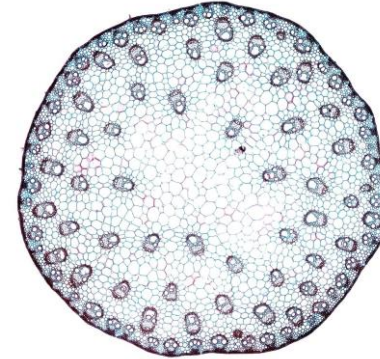
Caule sem crescimento secundário, com medula central

Raiz



Raiz fasciculada ou cabeleira

Vasos condutores



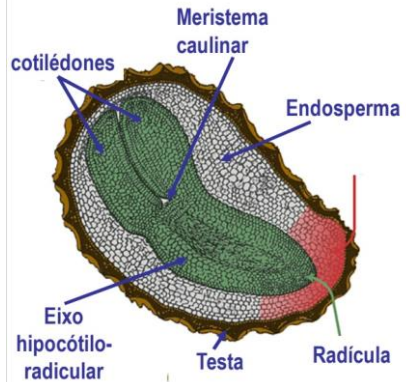
Feixes vasculares dispersos

Flor



Flores trímeras (com múltiplos de 3)

Eudicotiledôneas



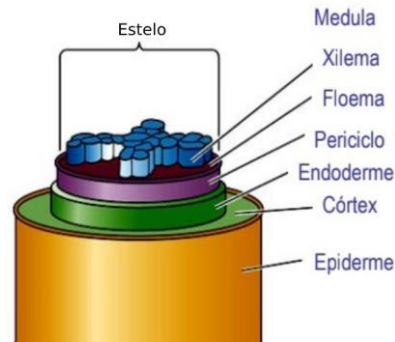
Eudicotiledônea

Dois cotilédones



Nervuras em vários padrões

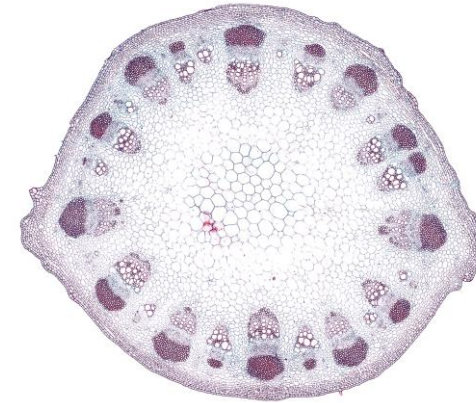
Estelo



Caule pode ter crescimento secundário, sem medula central



Raiz pivotante ou principal



Feixes vasculares formando anéis, presença de câmbio no crescimento secundário



Flores pentâmeras (com múltiplos de 5)